

FILL POINT & VENT EQUIPMENT



Fill Point & Vent Equipment / Filler Caps

PUMPS

FMS

METERS

HOSES

NOZZLES

ALARMS

GAUGES

FILTERS

FILL & VENT

VALVES

FITTINGS

TOOLS



Up to 4"

SIZE

F BSP

CONNECTION

**ANY
FLUID**

Aluminium Filler Cap

- › Robust filler cap designed to cap off the fill point of a tank or valve
- › Prevents dripping and unwanted debris/water from entering into the tank's fill pipe
- › Complete with chain and 'S' ring to secure the cap to the male threaded fill pipe
- › Two large lugs either side of the cap to enable easy application & removal
- › Comes with either a leather or rubber sealing washer
- › Available in a range of sizes depending on the installation requirements

Code	Description	Material	Seal	Chain	Threads	Fluids
MF3156	1 ½" Aluminium Filler Cap	Aluminium	Leather	Brass	1 ½" F BSP	AF
MF3157	2" Aluminium Filler Cap	Aluminium	Rubber	Brass	2" F BSP	AF
MF3158	2 ½" Aluminium Filler Cap	Aluminium	Leather	Brass	2 ½" F BSP	AF
MF3159	3" Aluminium Filler Cap	Aluminium	Rubber	Brass	3" F BSP	AF
MF3160	4" Aluminium Filler Cap	Aluminium	Rubber	Brass	4" F BSP	AF



Up to 3"

SIZE

F BSP

CONNECTION

**ANY
FLUID**

Brass Filler Cap

- › Hardwearing filler cap designed to cap off the fill point of a tank or valve
- › Prevents dripping and unwanted debris/water from entering into the tank's fill pipe
- › Complete with chain and 'S' ring to secure the cap to the male threaded fill pipe
- › Lugs either side of the cap to enable application & removal (apart from 1" model)
- › Comes with either a rubber, leather or synthetic sealing washer
- › Available in a range of sizes depending on the installation requirements

Code	Description	Material	Seal	Chain	Threads	Fluids
MF3155	1" Brass Filler Cap	Brass	Rubber		1" F BSP	AF
MF3161	1 ½" Brass Filler Cap	Brass	Leather		1 ½" F BSP	AF
MF3162	2" Brass Filler Cap	Brass	Synthetic	Brass	2" F BSP	AF
MF3163	2 ½" Brass Filler Cap	Brass	Leather	Brass	2 ½" F BSP	AF
MF3164	3" Brass Filler Cap	Brass	Leather	Brass	3" F BSP	AF

ANY FLUID

Plastic Filler Cap

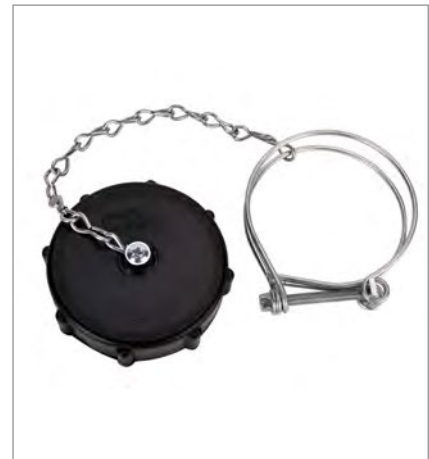
- › Cost effective filler cap designed to cap off the fill point of a tank or valve
- › Prevents dripping and unwanted debris/water from entering into the tank's fill pipe
- › Complete with chain and clip to secure the cap to the male threaded fill pipe
- › Small lugs positioned around the cap to enable easy application & removal

2"

SIZE

F BSP

CONNECTION



Code	Description	Material	Chain	Threads	Fluids
MF6152	2" Plastic Filler Cap	Plastic	Alloy	2" F BSP	AF

ANY FLUID

Stainless Steel Filler Cap

- › Robust filler cap designed to cap off the fill point of a tank or valve
- › Prevents dripping and unwanted debris/water from entering into the tank's fill pipe
- › Complete with chain and clip to secure the cap to the male threaded fill pipe
- › Small lugs positioned around the cap to enable easy application & removal
- › Supplied with leather seal as standard, PTFE on request for use with aggressive fluids

2"

SIZE

F BSP

CONNECTION

NEW



Code	Description	Material	Seal	Chain	Threads	Fluids
MF3154	2" Stainless Steel Filler Cap	Stainless Steel	Leather	Stainless Steel	2" F BSP	AF

D O K
DIESEL OIL KERSOENE

Spinsecure Tank Lock

- › Most secure tank lock on the market popular for domestic tanks
- › Fits onto a tank's 2" fill point to secure the contents against theft
- › Patented design means that when cap is locked it spins freely & is almost impossible to remove
- › Padlock free-design with no torque points for crowbar entry
- › High security numbered lock with over 50,000 combinations
- › Simple fitting with no sealants, adhesives or tools required
- › Adaptor available to allow use on 2" F threads



2"

SIZE

F BSP

CONNECTION



Code	Description	Material	Seal	Keys	Thread	Fluids
FSS750MF	2" Spinsecure Tank Lock	Zinc Alloy	NBR	3	2" F BSP	D O K
FSS750A	2" Spinsecure Tank Lock Adaptor	Zinc Alloy	NBR		2" M BSP	D O K